

BRITISH STANDARD (SGS Certified) TCB 18

Swivel Coupler



Size : 48.3 mm.
(EN 74-1:2005)
Refer to BS 1139

Double Coupler



Size : 48.3 mm.
(EN 74-1:2005)
Refer to BS 1139

Beam Clamp



Size : 48.3 mm.
(AS/NZS 1576.2:2009)
Refer to BS 1139

Bone Joint



Size : 48.3 mm.
(AS/NZS 1576.2:2009)
Refer to BS 1139

Putlog Coupler (Drop Forged)



Size : 48.3 mm.
(BS 1139-2.2:2009)
Refer to BS 1139

Sleeve Coupler (Pressed)



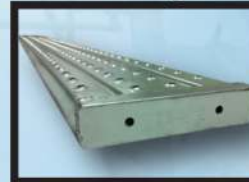
Size : 48.3 mm.
(EN 74-1:2005)
Refer to BS 1139

HOT-DIP GALVANIZED PIPE



Diameter :
48.3x3.2x6000 mm.
48.3x4.0x6000 mm.
(EN 39:2001)
Refer to BS 1139

Steel Planky



Specification :
210x45x1.2x2000 mm. Weight 7 kg.
210x45x1.2x3000 mm. Weight 10.4 kg.
210x45x1.2x4000 mm. Weight 13.8 kg.
(EN 1004:2004)
Refer to BS 1139

Steel & Aluminium Ladder



1. Size : L = 1.5-6.0 m.
2. Dimension : W-370

U-Head



For pipe 48 mm.
Standard : AS/NZS 1576.2:2009
Refer to BS 1139

Jack Base



Base Plate



Specification :
130x130 mm.
35x2.1x150 mm.
(EN 74-3:2007)
Refer to BS 1139

Plank Clamp



Board Retaining Couple (BRC)



Specification :
48.3 mm.